



Laboratory Furniture and Scientific Equipment.

INTRODUCTION

Futurelabs LLC specializes in consultation, planning, design, production, supply & installation of furniture for laboratories, hospitals, schools & kitchen. It also provides commissioning and maintenance of laboratory equipment. Our team of innovative and talented professionals are goal oriented and always meet and exceed the expectations of the customers.

The approach we follow is to start from the fundamental things like analysis of the work process, working out optimum solutions and providing practical advice to end users. We improve projects through our strategic planning and we make sure that trust is developed between clients and our professionals.

We are growing! Innovation is essential element in business. We thrive on talent and resourcefulness in various sectors such as research, education, medical and industries.





SANTHOSH PALLICKEN

Chief Operating Officer

“

From COO's desk.....

Yet, another milestone in the business journey of Futurelabs LLC has crossed with the launching of its Powder coating plant and Essential oil division. It is a distinct honour and a great privilege for me to write a few lines here on the proud occasion of releasing the new revised edition of Futurelabs' product Catalogue. I have immense pleasure in congratulating Futurelabs' highly professional and dedicated team for their tremendous progress and achievement in laboratory furniture industry and look forward to see more progress and development in future in its wide spectrum of activities. In this juncture I place on record all my best wishes to the entire team of Futurelabs LLC for their upcoming endeavors and reaching the goal of the company by keeping the highest quality standards and the aspiration of our valued clients.

Being a quality based organization, we focus on each individual customer, we always strive to know our client's unique and genuine requirements in order to provide relevant, value added services,

I hope that this catalogue will be helpful to all our customers and well-wishers to know about our innovative products and overall achievement of the company.

”

CONTENTS

- About us
- Products and services
- Quality
- Worktops
- Under bench cabinetry
- Laboratory furniture Models
- Service fittings
- Safety systems
- Laboratory stools & chairs
- Lecture hall seating
- Dental furniture
- Pharmacy furniture
- Chemical & Acid storage systems
- Kitchen & Home furniture
- Turnkey projects
- Certifications



ABOUT US

Futurelabs LLC focuses on manufacturing custom made metal and wood based furniture for laboratories, hospitals, schools, kitchen and laboratory equipment. We guarantee that all our products come with international standards at minimum cost.

Since pioneering the manufacturing of laboratory furniture in the Sultanate of Oman, Futurelabs is moving forward to furnish all laboratory requirements for universities, hospitals, companies and other institutions all throughout the Middle East & other countries. With our competent staff who have remarkable experience in this field, we are fully confident that our service are exceptional. Our primary goal is to make sure that our furniture is high quality and is affordable. At the same time, we keep the safety of our clients in mind at every step of the process.

To date, Futurelabs is one of the largest SEFA certified manufacturer of laboratory furniture in the Middle Eastern Region.



VISION

FUTURELABS LLC aims to make available best quality products, endorse excellence and innovative solutions for knowledge seekers in the design, manufacturing and use of laboratory furniture, equipment and merchandises.

MISSION

FUTURELABS LLC upholds and encourages quality and excellence in delivering laboratory furniture and equipment from the fundamentals by providing personalized practical advice to end users. It shall integrate people, strides and an innovative process to advance essential goals to meet the requirements of the customers.

MISSION OBJECTIVES

- ❑ Our primary objective is to install FUTURELABS quality furniture in your buildings to demonstrate our logical, precise planning and our flawless design.
- ❑ To be leaders in making furniture solutions that bring together structural, technological and efficient systems that respond resourcefully to strategic commercial ideas.
- ❑ To become the establishment of choice that facilitates and encourages all involved participants in creating the upmost safety from planning and design to the end product in operational laboratory environments.
- ❑ To be the prominent company that provides management, educates members and fundamental groups during designing and planning activities to suit the working environment as a coherent team that creates innovative solutions.



COMMITMENT

FUTURELABS LLC was inspired by our commitment to provide access to affordable, high-quality, suitable equipment and raw materials by keeping international standards in mind. We closely monitor the supply and production and proper installation with appropriate service back up.

OUR VALUES

INTEGRITY

We deal with our patrons in a straightforward and honest manner. We strictly comply with the laws and regulations governing our business. Honesty is the key to our achievement and progress.

RESPECT

We build professional partnerships through harmony and association. We value impartiality, dignity and above all, confidentiality. We value, encourage and take care of our staff.

LEADERSHIP

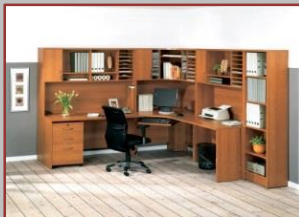
We encourage competency, bravery, self-confidence, and the desire to surpass expectations in our staff members. We support them in every way possible to see that they excel in their work and have enough prospects for individual growth.

FUTURELABS LLC accomplishes the laboratory of YOUR choice with utmost professionalism.



- LABORATORY FURNITURE
- DENTAL FURNITURE
- MEDICAL FURNITURE
- EDUCATIONAL FURNITURE
- MODULAR KITCHEN

- LAMINAR FLOW CABINET
- MICRO BIOLOGY SAFETY CABINET
- LECTURE HALL SEATINGS
- CHEMICAL AND REAGENTS
- SCIENTIFIC EQUIPMENT



QUALITY

We manufacture the components of our **laboratory furniture system** ourselves with a manufacturing penetration which is our own peculiarity in the industry. This allows us to dictate our quality level and to create special solutions faster.

Rigorous quality management combined with the extraordinary commitment of all our employees will guarantee a customer-oriented style of partnership even in the future – with Futurelabs.



OUR TECHNICAL PARTNERS



TRE|SPA®



BROEN-LAB



asecos®



blum®

G* GRASS



Epoxy Resin: Epoxy resins offer the characteristic of non-flammability, non-absorbency, superior chemical resistance and extreme durability. They are available in thickness of 19mm, 25 mm and 32 mm and six different styles Classic top, Classic marine top, Contoura top, Contoura Control top, Classic covered curb and Classic marine covered curb. The epoxy sinks and drip cups are used with this kind of tops.



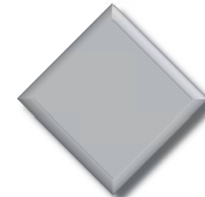
WORKTOPS

Depending upon the type of laboratory and the budget, Futurelabs offers a range of worktops to choose from.

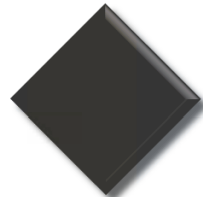
The selections of colors are available.



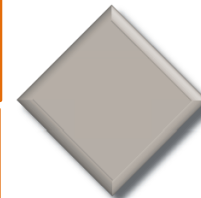
BLACK ONYX



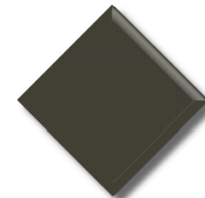
GRAY



GRAPHITE
(DARK GRAY)



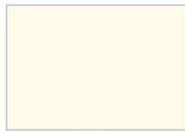
TAN



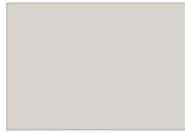
DARK KHAKI



LUNAR WHITE
(LIGHT GRAY)



T03.0.0
WHITE



T03.1.0
PASTEL GRAY



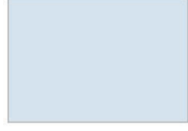
T03.4.0
SILVER GRAY



T03.5.0
LIMESTONE YELLOW



T03.1.0
PASTEL GRAY



T03.4.0
SILVER GRAY



T90.0.0
BLACK



T70.0.0
SLATE GRAY



T02.1.0
PASEL GRAY/SILVER



TRESPA®

Phenolic Resin (Trespa): Phenolic resin is a non-melamine solid self-supporting laboratory worktop with a chemical resistant pigmented surface integrated within the cellulose fiber reinforced panel material with superior physical characteristics. The unique chemical, physical and mechanical properties and its ability to withstand extreme conditions and makes it ideal for a broad variety of laboratory applications. Trespa TOPLAB is available in standard thickness of 16mm and 20mm in different colors to choose from. It is also available with integrated marine edges. Epoxy sink, polypropylene sink and drip cups are used with these type of worktops.

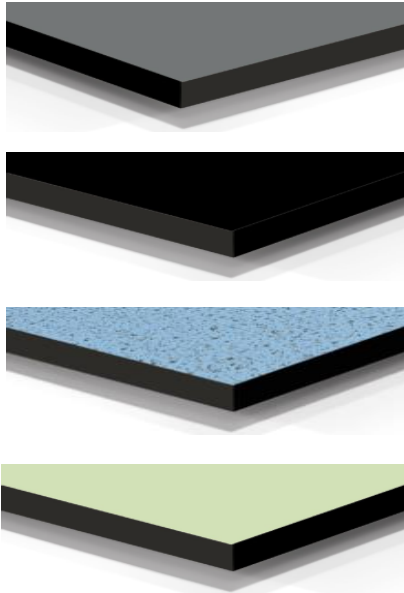
SOLID SURFACE (ACRYLIC) TOPS

Solid surface (Acrylic) tops are used where the appearance along with the chemical properties are of prime importance. It offers a seamless installation, which gives scope for high degree of creativity. It also offers a super resistance to stains. Acrylic sinks are used with practically no visibility of a joint.



FUNDERMAX®

THE COLLECTION



Max Resistance is a duromer high pressure laminate (HPL) produced in laminate presses, under high pressure at high temperature, in accordance with EN 438-4, type CGS. Due to its scientifically developed, double-cured polyurethane acrylic coating, Max Resistance stands up to the toughest tests-unaffected by solvents, most acids and the harshest chemicals. Easy to clean and disinfect and at the same time wear and scratch resistant, this innovative material significantly extends the life cycle of your laboratory work surface.



Maximum performance

Max Resistance not only meets the standards set by SEFA 3, it surpasses them; the harshest chemicals applied to horizontal lab surfaces have no impact whatsoever. Even Hydrofluoric Acid and Sulfuric Acid don't damage the surface.

MELAMINE LAMINATED PLYWOOD

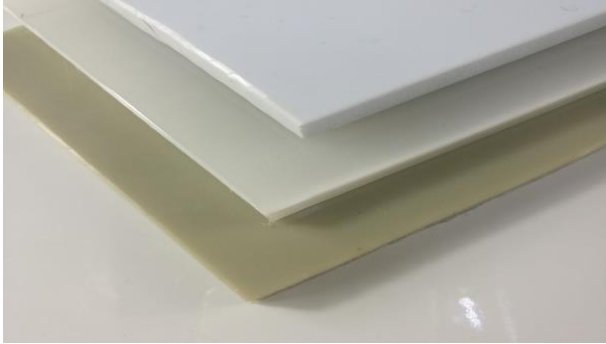
This is the most economical acid resistant worktop of all the worktops mentioned here. The 0.9mm thick melamine laminated is hot pressed on the plywood core, with 3mm thick P.V.C edging on the sides. The users can choose from a wide range of colors and thickness. Stainless steel / polypropylene sinks are generally used with this kind of worktops.



STAINLESS STEEL

Stainless steel tops are bonded onto a wood core with suitable reinforcing on the underside. They are available either flat or with raised edges. Stainless steel sinks are used in integrated or top mounted with this stainless steel top.





POLYPROPYLENE

Where the prime concern is acid resistance, polypropylene is the best solution. Polypropylene sinks and drip cups are also available.

CERAMIC TILES

The first grade chemical resistant tiles are bonded to the base and jointed with chemically resistant cement. These are used where a high chemical resistance and the traditional look is required. The ceramic sinks and drip cups supplement these type of tops.



POST-FORMED WORKTOP

Post-formed worktops are made of MDF or Chipboard panels laminated with high pressure laminate where panel edges can be formed with a variety of curves to provide a seam free, smooth and durable surface/edge. This is more economical than other counter tops and has a broad selection of surface material to choose from.



THE CORE MATERIALS

Cabinetry is made of 18mm thick Water and Boil proof plywood with 0.9mm thick melamine laminate finished with 3mm thick pvc edge for door / drawers front. Cabinet body is of 0.7mm thick melamine laminate finished and 0.5mm thick pvc tape edging. Corrosion proof, clip-on, self closing hinges, opening up to 170 degree and adjustable in three directions. The cabinetry comes with extruded aluminum grab rail, plastic grab holders or handles powder coated to the clients choice of colors. The cabinetry is also available mounted on heavy duty castors.

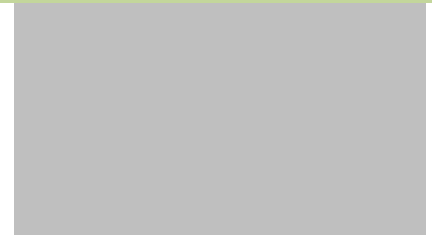


UNDER BENCH CABINETRY

FUTURELABS offers a wide range of cabinetry to suit all purposes. Storage cabinets with adjustable shelves, drawer cabinets, sink cabinets, open storage cabinets, glassware cabinets, filing drawer cabinets, waste bin cabinets and knee hole shelf cabinets.

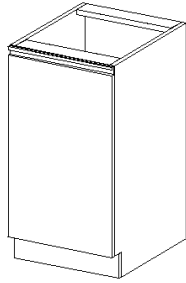


FUTURELABS LLC offers a variety of products that come with the **BASIC, IDEAL, PRIME, CLASSIC** and **ADVANCE** models to choose from to suit the specific needs of every characteristic laboratory.

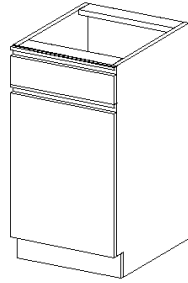


The Basic model consists of a rigid bench construction in which the work top is directly supported on the under bench cabinets.

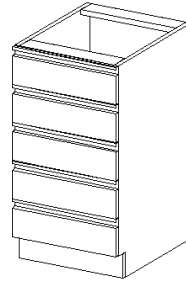




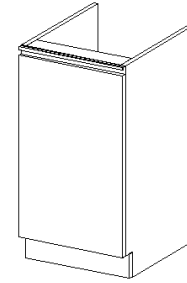
FL045U1HB



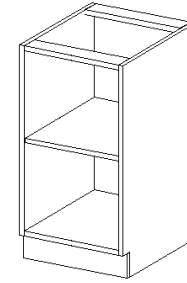
FL045U2HB



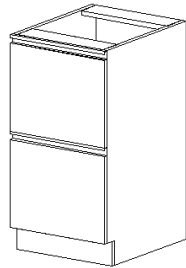
FL045U3HB



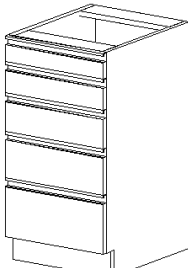
FL045U4HB



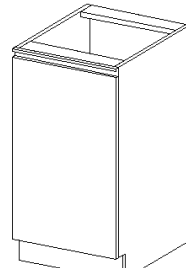
FL045U5HB



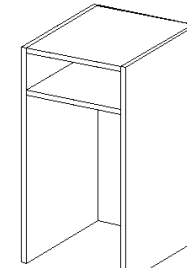
FL045U6HB



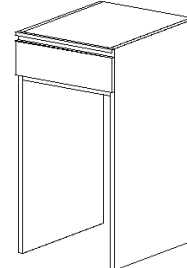
FL045U7HB



FL045U8HB



FL045U9HB



FL045U10HB

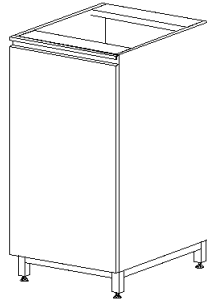
Underbench Cabinets Working Height 900mm/750mm

ITEM CODE (WOOD)	ITEM CODE (METAL)	DESCRIPTION	WIDTH (mm)	DEPTH (mm)
FL045U1HB	FLS045U1HB	Storage cabinet with one adjustable shelf	450, 600, 900, 1200	450/540
FL045U2HB	FLS045U2HB	Storage cabinet with one drawer and one adjustable shelf	450, 600, 900, 1200	450/540
FL045U3HB	FLS045U3HB	Drawers cabinet	450, 600, 900, 1200	450/540
FL045U4HB	FLS045U4HB	Sink cabinet	450, 600, 900, 1200	450/540
FL045U5HB	FLS045U5HB	Open storage cabinet	450, 600, 900, 1200	450/540
FL045U6HB	FLS045U6HB	Filing drawers cabinet	450, 600, 900, 1200	450/540
FL045U7HB	FLS045U7HB	Multi drawers cabinets	450, 600, 900, 1200	450/540
FL045U8HB	FLS045U8HB	Waste bin cabinet	450, 600, 900, 1200	450/540
FL045U9HB	FLS045U9HB	Knee hole shelf cabinet	450, 600, 900, 1200	450/540
FL045U10HB	FLS045U10HB	Knee hole drawer cabinet	450, 600, 900, 1200	450/540

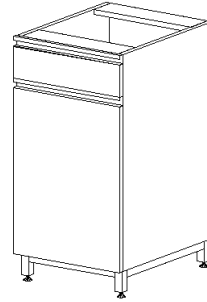
The Ideal model consists of a blatant construction with 100mm high frame work with or without toe kick. The worktop is mounted on the cabinet and cabinet supported with MS powder coated or stainless steel frames. The frames are provided with height adjustable feet.

IDEAL MODELS

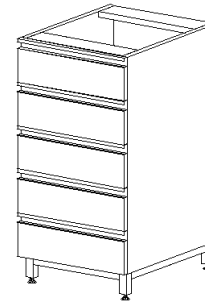




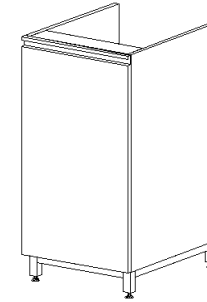
FL045U1HI



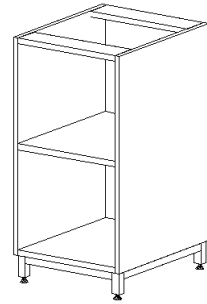
FL045U2HI



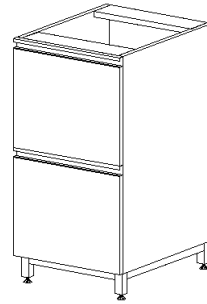
FL045U3HI



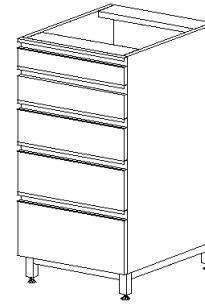
FL045U4HI



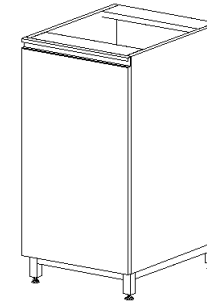
FL045U5HI



FL045U6HI



FL045U7HI



FL045U8HI

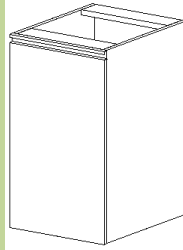
Underbench Cabinets Working Height 900mm/750mm

ITEM CODE (WOOD)	ITEM CODE (METAL)	DESCRIPTION	WIDTH (mm)	DEPTH (mm)
FL045U1HI	FLS045U1HI	Storage cabinet with one adjustable shelf	450, 600, 900, 1200	450/540
FL045U2HI	FLS045U2HI	Storage cabinet with one drawer and one adjustable shelf	450, 600, 900, 1200	450/540
FL045U3HI	FLS045U3HI	Drawers cabinet	450, 600, 900, 1200	450/540
FL045U4HI	FLS045U4HI	Sink cabinet	450, 600, 900, 1200	450/540
FL045U5HI	FLS045U5HI	Open storage cabinet	450, 600, 900, 1200	450/540
FL045U6HI	FLS045U6HI	Filing drawers cabinet	450, 600, 900, 1200	450/540
FL045U7HI	FLS045U7HI	Multi drawers cabinets	450, 600, 900, 1200	450/540
FL045U8HI	FLS045U8HI	Waste bin cabinet	450, 600, 900, 1200	450/540

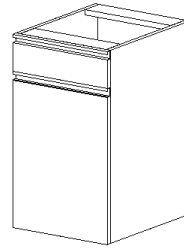
The Prime model consists of frame work of 30x30x2mm thick MS powder coated tubes. The worktop is mounted on the frames. The under bench cabinetry is fixed to the frames. The frames are provided with height adjustable feet.

PRIME MODELS

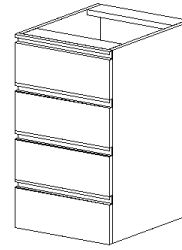




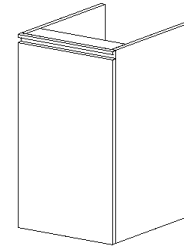
FL045U1HP



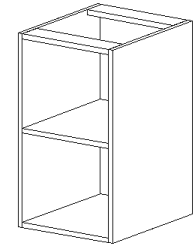
FL045U2HP



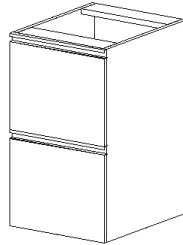
FL045U3HP



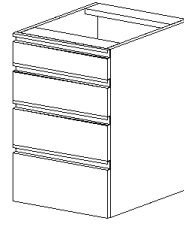
FL045U4HP



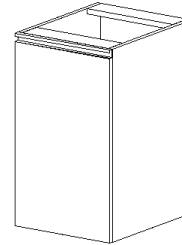
FL045U5HP



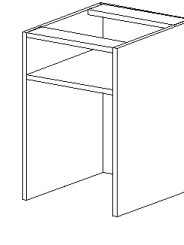
FL045U6HP



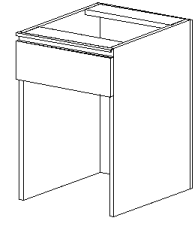
FL045U7HP



FL045U8HP



FL045U9HP



FL045U10HP

Underbench Cabinets Working Height 900mm/750mm

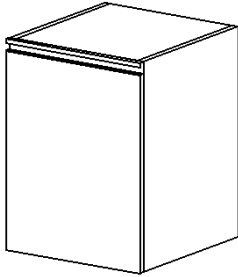
ITEM CODE (WOOD)	ITEM CODE (METAL)	DESCRIPTION	WIDTH (mm)	DEPTH (mm)
FL045U1HP	FLS045U1HP	Storage cabinet with one adjustable shelf	450, 600, 900, 1200	420/520
FL045U2HP	FLS045U2HP	Storage cabinet with one drawer and one adjustable shelf	450, 600, 900, 1200	420/520
FL045U3HP	FLS045U3HP	Drawers cabinet	450, 600, 900, 1200	420/520
FL045U4HP	FLS045U4HP	Sink cabinet	450, 600, 900, 1200	420/520
FL045U5HP	FLS045U5HP	Open storage cabinet	450, 600, 900, 1200	420/520
FL045U6HP	FLS045U6HP	Filing drawers cabinet	450, 600, 900, 1200	420/520
FL045U7HP	FLS045U7HP	Multi drawers cabinets	450, 600, 900, 1200	420/520
FL045U8HP	FLS045U8HP	Waste bin cabinet	450, 600, 900, 1200	420/520
FL045U9HP	FLS045U9HP	Knee hole shelf cabinet	450, 600, 900, 1200	420/520
FL045U10HP	FLS045U10HP	Knee hole drawer cabinet	450, 600, 900, 1200	420/520



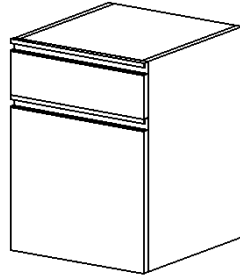
The Classic model consists of a net work of frames of 60x40x3mm, 60x30x3mm tubes and 20x20x2mm thick MS powder coated angles. The under bench cabinets in this model are the sliding type.

CLASSIC MODELS

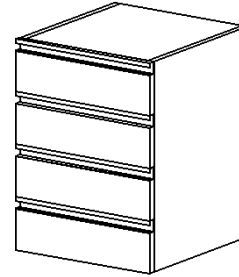




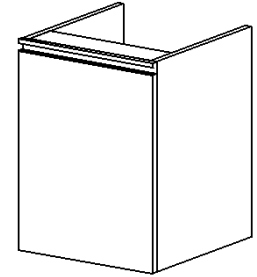
FL045U1HC



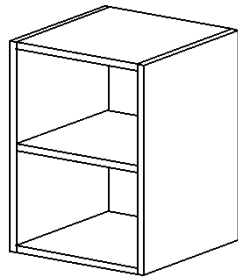
FL045U2HC



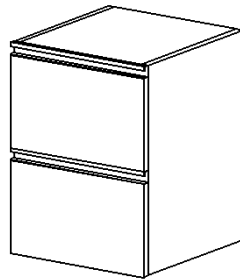
FL045U3HC



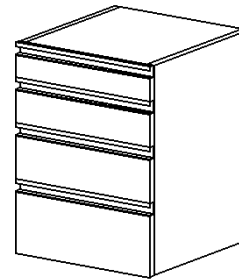
FL045U4HC



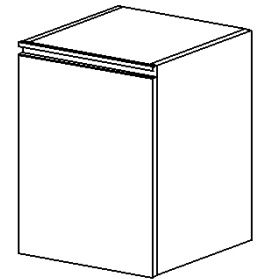
FL045U5HC



FL045U6HC



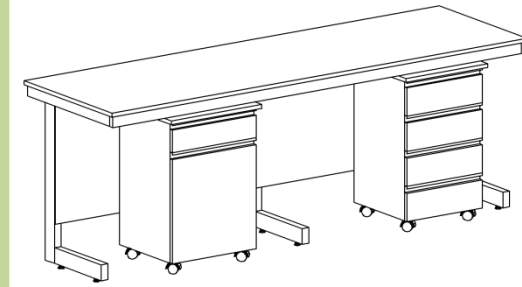
FL045U7HC



FL045U8HC

Underbench Cabinets Working Height 900mm/750mm

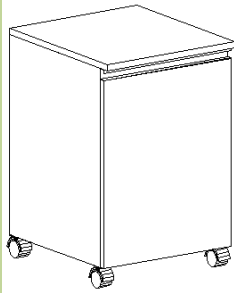
ITEM CODE (WOOD)	ITEM CODE (METAL)	DESCRIPTION	WIDTH (mm)	DEPTH (mm)
FL045U1HC	FLS045U1HC	Storage cabinet with one adjustable shelf	450, 600, 900, 1200	455
FL045U2HC	FLS045U2HC	Storage cabinet with one drawer and one adjustable shelf	450, 600, 900, 1200	455
FL045U3HC	FLS045U3HC	Drawers cabinet	450, 600, 900, 1200	455
FL045U4HC	FLS045U4HC	Sink cabinet	450, 600, 900, 1200	455
FL045U5HC	FLS045U5HC	Open storage cabinet	450, 600, 900, 1200	455
FL045U6HC	FLS045U6HC	Filing drawers cabinet	450, 600, 900, 1200	455
FL045U7HC	FLS045U7HC	Multi drawers cabinets	450, 600, 900, 1200	455
FL045U8HC	FLS045U8HC	Waste bin cabinet	450, 600, 900, 1200	455



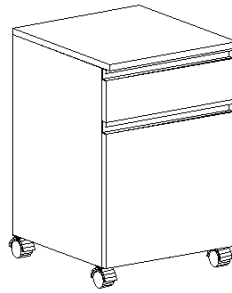
ADVANCE MODELS



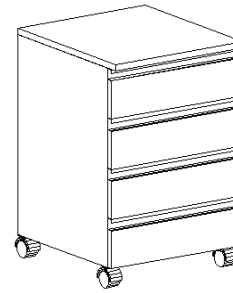
The advance model consists of a network of frames of 60x30x3 mm, 60x40x3 mm tubes and 20x20x2 mm thick MS powder coated angles. It also consists of an I- frame made of MS powder coated 150x40x3 mm thick section on which the shelving, reagent racks and the service box are mounted. The under bench cabinets in this mode are trolley type cabinets with castors.



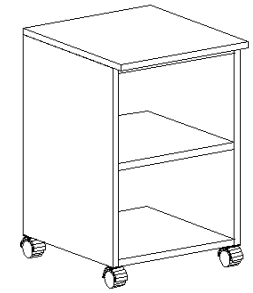
FL045U1HB



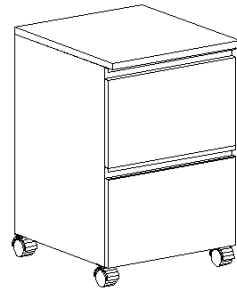
FL045U2HB



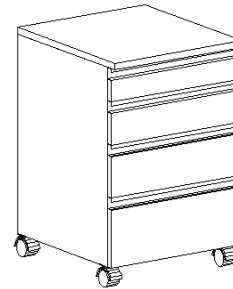
FL045U3HB



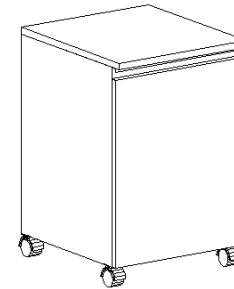
FL045U5HB



FL045U6HB



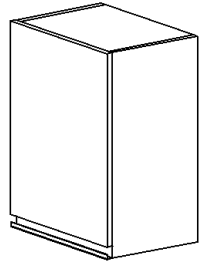
FL045U7HB



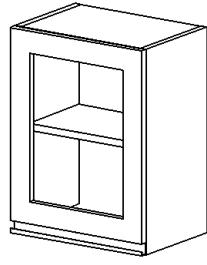
FL045U8HB

Underbench Cabinets Working Height 900mm/750mm

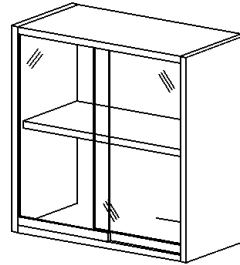
ITEM CODE (WOOD)	ITEM CODE (METAL)	DESCRIPTION	WIDTH (mm)	DEPTH (mm)
FL045U1HA	FLS045U1HA	Storage cabinet with one adjustable shelf	450, 600, 900, 1200	430
FL045U2HA	FLS045U2HA	Storage cabinet with one drawer and one adjustable shelf	450, 600, 900, 1200	430
FL045U3HA	FLS045U3HA	Drawers cabinet	450, 600, 900, 1200	430
FL045U5HA	FLS045U5HA	Open storage cabinet	450, 600, 900, 1200	430
FL045U6HA	FLS045U6HA	Filing drawers cabinet	450, 600, 900, 1200	430
FL045U7HA	FLS045U7HA	Multi drawers cabinets	450, 600, 900, 1200	430
FL045U8HA	FLS045U8HA	Waste bin cabinet	450, 600, 900, 1200	430



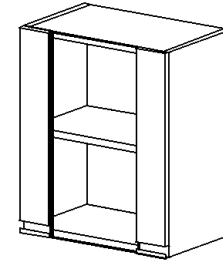
FL045W1-30



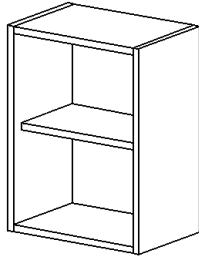
FL045W2-30



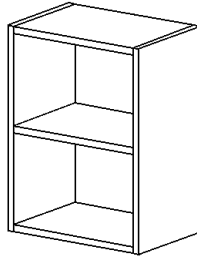
FL090W3-30



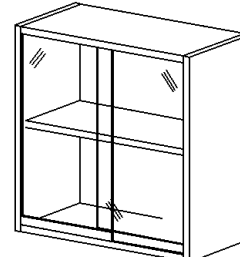
FL045W4-30



FL045W5-30



FL045W6-30

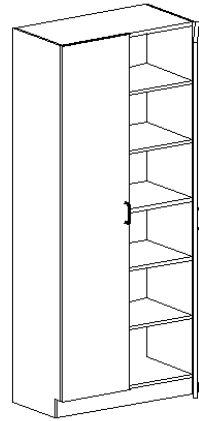


FL090W7-30

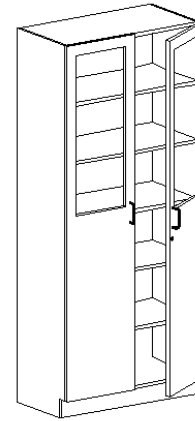


WALL CABINETS

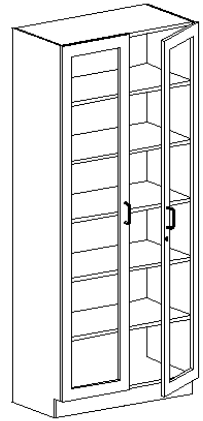
ITEM CODE (WOOD)	ITEM CODE (METAL)	DESCRIPTION	WIDTH (mm)	DEPTH (mm)	HEIGHT (mm)
FL045W1-30	FLS045W1-30	Storage cabinet with panel doors	450, 600, 900, 1200	300	600
FL045W2-30	FLS045W2-30	Storage cabinet with glass infill doors	450, 600, 900, 1200	300	600
FL090W3-30	FLS090W3-30	Storage cabinet with sliding glass doors	900, 1000, 1200	300	600
FL045W4-30	FLS045W4-30	Storage cabinet with hinged glass doors	450, 600, 900, 1200	300	600
FL045W5-30	FLS045W5-30	Open storage cabinet	450, 600, 900, 1200	300	600
FL045W6-30	FLS045W6-30	Double side open storage cabinet	450, 600, 900, 1200	300	600
FL090W7-30	FLS090W7-30	Double side sliding glass doors	900, 1000, 1200	300	600



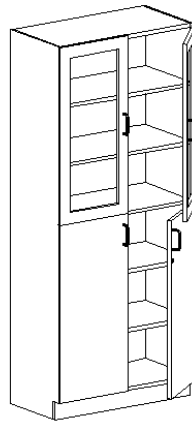
FL090T1-45



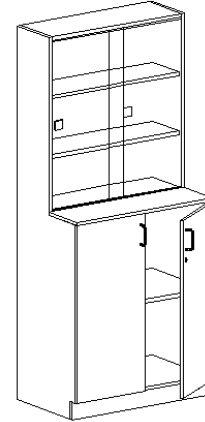
FL090T2-45



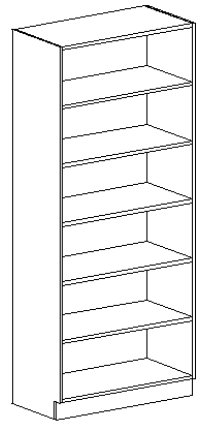
FL090T3-45



FL090T4-45



FL090T5-45

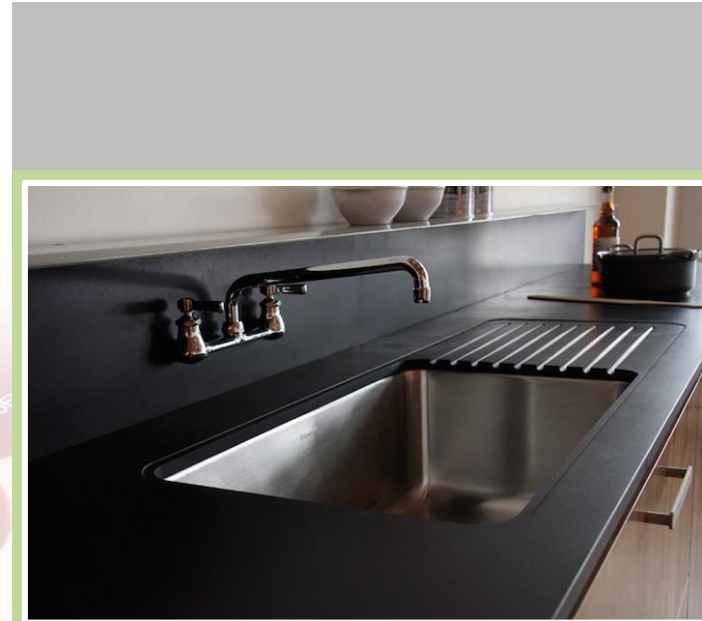


FL090T6-45

ITEM CODE (WOOD)	ITEM CODE (METAL)	DESCRIPTION	WIDTH (mm)	DEPTH (mm)	HEIGHT (mm)
FL090T1-30	FLS090T1-30	Storage cabinet with panel doors	450, 600, 900, 1200	450/550	2100
FL090T2-30	FLS090T2-30	Storage cabinet with glass infilt doors	450, 600, 900, 1200	450/550	2100
FL090T3-30	FLS090T3-30	Storage cabinet with full glass infilt doors	450, 600, 900, 1200	450/550	2100
FL090T4-30	FLS090T4-30	Storage cabinet with four panel doors	450, 600, 900, 1200	450/550	2100
FL090T5-30	FLS090T5-30	Storage cabinet with panel & glass doors	450, 600, 900, 1200	450/550	2100
FL090T6-30	FLS090T6-30	Open storage cabinet	450, 600, 900, 1200	450/550	2100

SERVICE FITTINGS

FUTURELABS offers a wide range of service fittings made by the leading international manufactures such as Broen, , Method etc. These fittings conform to international standards for usage in laboratories with approval from all the leading quality and safety institutions. All the service fittings are available with various options to suit the required designs. The fittings are mounted on service channels, service boxes or on the bench tops as per design and the client's requirements.



CANOPY HOOD

Where a closed workspace is not required, canopy hoods are used. Canopy hoods can either be wall mounted or hanging type units. They can be manufactured with either stainless steel or epoxy coated mild steel in different sizes to suit the application.



FLEXIBLE SUCTION ARMS

Flexible suction arms are used in places where minimum volume is required within a limited area.



SAFETY SYSTEMS

Today's safe laboratories demand advanced emergency eyewash and shower equipment. Futurelabs offers a complete selection of emergency equipment designed specifically for laboratory applications. Our design experts consider the application required incorporating the safety fitting. Various kinds of showers – wall mounted, ceiling mounted, eyewashes-bench mounted, pedestal mounted foot operated, auto flow and safety stations are available.



LABORATORY STOOLS (HEIGHT ADJUSTABLE)

Constructed from mild steel epoxy coated pipes with a slightly dished 30mm thick plywood seat or cushion seat. Legs are available with fixed feet with rubber or castors with locks.



ANTI VIBRATION TABLE

The balance table top is made of 36mm thick melamine laminated plywood, mounted on the epoxy coated mild steel frames. The vibration-dampening area is manufactured using a large mass mounted on shock absorbers and topped with 450x450 mm slab of marble 60mm thick.

DRIP RACKS

Drip racks are made of stainless steel or epoxy coated mild steel. The pegs are made of nylon rods firmly secured onto the rack.





PRODUCT ADVANTAGES

- Ergonomic design enhances worker comfort and productivity when sitting for long periods of time; easily adjusted controls to meet the needs of multiple shift users
- High-end aesthetics enhance and complement workplace and institutional environments
- Modular construction enables custom configurations to meet specific needs
- Standard components that many manufacturers offer only as costly upcharge options
- 13-Year warranty – Nearly all BioFit products are warranted to the original purchaser against mechanical or structural failure due to defective material or workmanship for 13 years of normal, multi-shift use. Pneumatic cylinders are covered for the functional lifetime of the chair or stool.

Building
the Best Fit
for Your Seat



LECTURE HALL SEATING

This consists of a combined desk and benches. A mild steel epoxy coated framework grouted to the ground holds the system together.



FUTURELABS specialize in creating optimal educational environments with our lecture hall seating which maximizes learning opportunities as well as withstanding the demands of the modern education environment. By working closely with universities and architects we are able to create an environment which provides both high performance and flexibility, not only reflecting new teaching pedagogics, but also encouraging a collective approach to learning. Our range of education seating offers comfort, style and durability, supporting the needs and wellbeing of the student, as well as meeting the goals of the college or university such as budget, durability and additional revenue generation.





DENTAL FURNITURE

Futurelabs Dental Cabinet Solutions offers today's Modern Clinician Operator, Sterilization, and Lab Environments with emphasis on Quality, Clinical Workflow, and Ancillary Equipment Integration. **For Dentist By Dentist!**

Dental Benches.

Dental Cabinets.

Dental work top.

Dental Chairs.

**Futurelabs....
 your smile Begins here.**



PHARMACY FURNITURE

FUTURELABS product range also includes furniture for Pharmacy. Pharmacy units consisting of various combinations of under bench and over head case works to suit each individual pharmacy requirement can be manufactured to customer's satisfaction. Also available are gravity shelves, pull-out cupboards, drawers with dividers, bottle racks and display Shelves



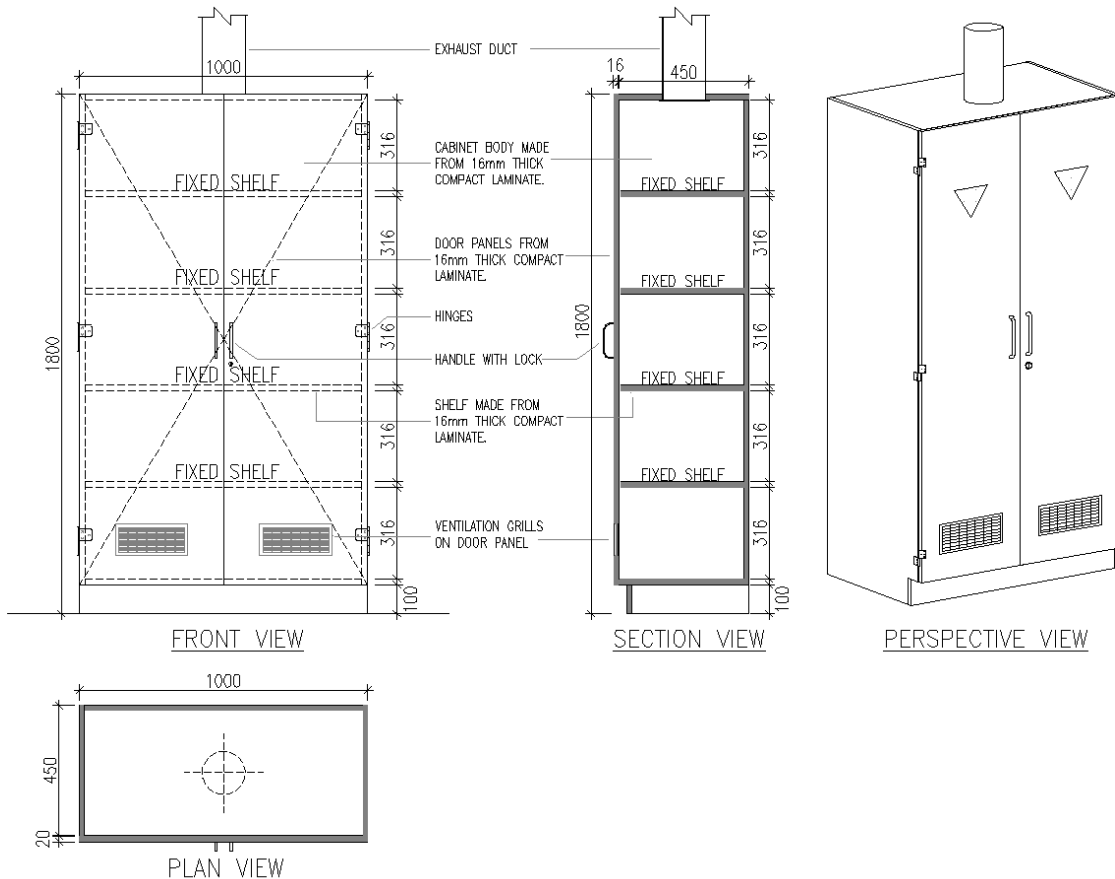
CHEMICALS AND REAGENTS

FUTURELABS focuses also on supplying laboratory chemicals and reagents catering a wide range of service for schools, universities, hospitals and research establishments. Main supply facilities with respect to its existing stocks are intended for the following: Inorganic chemicals, Inorganic acid chemicals, Inorganic metals, Organic chemicals, Organic acid chemicals, Bio Reagents, Pharmaceutical reagents and Dilution reagents. Chemical Safety Data Sheet (SDS) are also available for access guidance for proper classification, handling and storing of chemicals.



CHEMICAL STORAGE CABINETS

This are special cabinets lined with polypropylene and doors fitted with stainless steel hinges, used for storing acids, and solvents. Depending upon the type of acid stored, this cabinet can be provided with a ventilation or air venting system.



Dimensions

Width (mm)	900 / 1000 / 1200 (mm)
Depth (mm)	450 / 500 / 550 (mm)
Height (mm)	1800 / 2000 / 2100 (mm)

ACID STORAGE CABINETS

Futurelabs provides for every application the suitable safety storage cabinet.

Use our configurator to create your individual solution.



Dimensions (exterior)	
Model FLAS01	1193 (W) x 615 (D) x 1953(H) mm
Model FLAS02	893 (W) x 615 (D) x 1953(H) mm
Model FLAS03	599 (W) x 615 (D) x 1953(H) mm

Model:

Safety storage cabinet, tall cabinet with wing door(s), with cylinder locking and locking state indicator, integrated adjusting aids to compensate uneven floor. compliant **dimensions** exterior: W x D x H (mm) 1193 x 615 x 1953 interior: W x D x H (mm) 1050 x 522 x 1647

Colour:

corpus: RAL 7016 Anthracite grey, textured
 door(s): RAL 1004 Warning yellow, textured

Interior equipment:

3x HF.M.27065 tray shelf
 (standard), L= 150 kg, V= 33 Litre, stainless steel 1.4016, raw
 1x HF.M.16167 bottom collecting sump
 standard, V= 56 Litre, stainless steel 1.4301, raw

KITCHEN & HOME FURNITURE

Making beautiful kitchens is hardly a challenge. Making beautiful, accessible kitchens, on the other hand, is. It brings out the very best in us. Accessible and beautiful. It's not something anyone can, or even wants to do. But we do. For, and along with our clients and their customers.



We, Futurelabs LLC, would like to introduce ourselves as the manufacturing company that deals in all types of kitchen furniture for Residence. Our company is dedicated to delivering the highest quality materials and best total value to our customers. Also, we are keenly aware of the importance of reliability, efficiency and environmental impact of our product range, making every effort to provide our customers with full satisfaction of knowledge they need related to the kitchen furniture as per their order.



TURN KEY PROJECTS

To meet the growing demands of the ever-modernizing healthcare sector, FUTURELABS undertakes turnkey projects, offering the best and most modern solutions. Futurelabs offers designing, manufacturing, supply and installation of complete furnishing for hospitals, schools, universities, professional laboratories, rehabilitation center, etc.. Working in close consultation with the end user and understanding the basic objective of the projects, our professional designers utilize the latest CAD drafting techniques, create the designs, which are user friendly and optimal in objectives. The team of skilled technicians bring to life the creative designs. All this is achieved using the most modern manufacturing techniques, without compromising on quality which is ensured by the stringent quality tests at all levels of production. From here on the team of installation technicians completes the task of implementation of the project.



AWARDS & CERTIFICATION

Futurelabs laboratory furniture comply with the most demanding regulations for lab furniture and equipment's.

